

Comprehensive Content Delivery Reporting Solution

A key challenge in optimizing network data management and content delivery is the ability to analyze content usage, network performance, and infrastructure load. Network Appliance™ offers its customers a unique solution to this challenge with its ContentReporter application. ContentReporter integrates seamlessly with NetApp® appliances to provide network administrators a comprehensive, simple, flexible, and scalable method to gauge their network's effectiveness. Enterprises, Internet Service Providers (ISPs), content delivery networks (CDNs), and content providers can now gain visibility to file usage patterns, activity levels, and error rates, allowing them to proactively manage their content delivery infrastructure and plan for future growth.

When deployed throughout a network, NetCache™ appliances continually transmit usage and performance data to a centralized server and directory. This data can be extremely valuable if properly integrated and presented. ContentReporter gives customers the unique ability to aggregate this information, providing reporting capability for the entire content distribution environment, while preserving each NetCache appliance's URL and domain information. ContentReporter parses the aggregated data to an ODBC-compliant database, allowing administrators to create a variety of reports:

- ◆ Performance Analysis—Critical performance information, including bandwidth usage and error rates.
- ◆ Activity—Content delivery activity by URL, user name, or site.
- ◆ Usage and Billing—Full integration with leading billing and tracking software packages.

Proactively Plan and Manage the Content in Your Network

Using ContentReporter's tools, network administrators have the information they need to most effectively manage the content in their network.

Possibilities include:

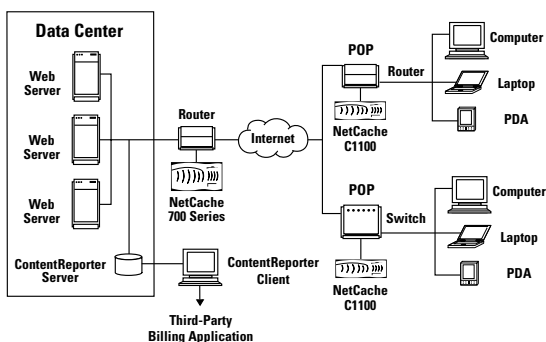
- ◆ Identify which types of files are most frequently requested. Using this information, it is possible to proactively distribute files, using NetApp's ContentDirector application, to improve end-user response time and manage bandwidth usage.
- ◆ Determine when parts of the network infrastructure are being stressed by growth or activity and solve potential infrastructure problems before they occur.
- ◆ Create accurate, complete usage information for billing purposes.

In an enterprise intranet, for example, ContentReporter's aggregate activity logs might show that the Human Resources site sees a lot of activity, especially in remote offices. When changes to that site are made, the administrator would know to distribute that new content to the distributed NetCache appliances. This action would manage intranet bandwidth, since the content could be pushed at off-peak hours, and increase employee productivity, because they wouldn't have to wait for the content to be retrieved from a central site.

CDNs can more quickly respond to regional events and deploy relevant content. For example, if a hurricane develops off the coast of Florida and usage reports indicate that local users begin requesting tracking and preparedness information, more content of that type can be deployed to NetCache appliances in the Southeastern United States in advance of peak local demand. Network administrators can proactively distribute content at off-peak hours, optimizing bandwidth use and ensuring that end users enjoy fast response times.

ISPs can offer additional feature rich-services and generate additional revenue by obtaining cache usage information for accurate billing and tracking. ContentReporter can provide billing reports specific to each domain involved in the services.

The Architecture



ContentReporter aggregates log files from multiple NetCache appliances throughout a network, enabling overall analysis to be performed from anywhere on the network.

ContentReporter is highly scalable, processing large volumes of data in significantly less time than any other reporting tool available today. With this offering, Network Appliance provides the most comprehensive reporting solution available to keep content delivery infrastructures moving at top speed.

System Requirements

ContentReporter Server:

- Pentium® III 500MHz or greater
- 256MB RAM or greater
- 1GB disk or greater (disk space should be sufficient for number/size of log files collected)

Supported Platforms:

- Windows NT® Server 4.0 SP 5 or greater, Windows® 2000 (Server, Advanced Server)

Supported Databases:

- Oracle 8i™, MS SQL 7.0, Sybase 11.5

Supported Log Formats:

- NetCache, Standard Web log, Squid
- Cache Support: NetCache v5.x

ContentReporter Client:

- Pentium III 500MHz or greater
- 128MB RAM or greater
- 200MB disk or greater

Supported Platforms:

- Windows NT 4.0 SP 5 or greater, Windows 2000 (Professional, Server, Advanced Server)

About Network Appliance

Network Appliance is the only company that delivers end-to-end data management and content delivery systems for enterprise and service provider networks. Our solutions allow businesses around the world to simplify, share, scale, and support their networking infrastructure—without limits. It's simple—our customers demand the ability to access and transfer information seamlessly, which is just what Network Appliance provides. More information can be found at: www.netapp.com.



NetworkAppliance®

www.netapp.com

©2000 Network Appliance, Inc. All rights reserved. Specifications subject to change without notice. NetApp and the Network Appliance logo are registered trademarks and Network Appliance and NetCache are trademarks of Network Appliance, Inc. in the U.S. and other countries. Pentium is a registered trademark of Intel Corporation. Windows and Windows NT are registered trademarks of Microsoft Corporation. Oracle 8i is a trademark of Oracle Corporation. All other brands or products are trademarks or registered trademarks of their respective owners and should be treated as such.

DS-2342 Rev 10/00